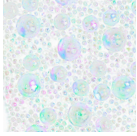


SWAROVSKI

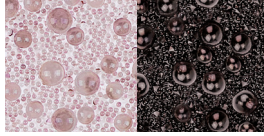
CRYSTAL GALUCHAT

Crystal Aurore Boreale (001 AB)



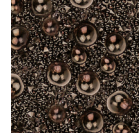
010 Transparent

Crystal Antique Pink (001 ANTP)



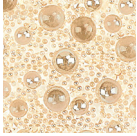
010 Transparent 012 Black

Crystal Copper (001 COP)



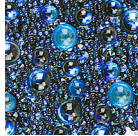
012 Black

Crystal Golden Shadow (001 GSHA)



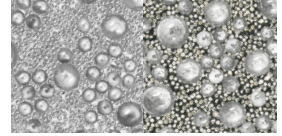
010 Transparent

Crystal Moonlight (001 MOL)



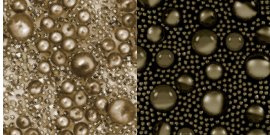
012 Black

Crystal Comet Argent Light (001 CAL)¹



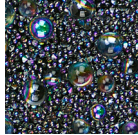
010 Transparent 012 Black

Crystal Metallic Light Gold (001 MLGLD)



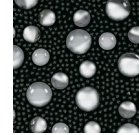
010 Transparent 012 Black

Crystal Paradise Shine (001 PARSH)



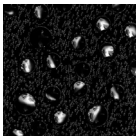
012 Black

Crystal Comet Argent Light (001 CAL) & Jet Hematite (280 HEM)



012 Black

Jet Hematite (280 HEM) ^{NEW!}



012 Black

¹ Please note that Crystal Comet Argent Light (001 CAL) is not suitable for swimwear because the effect 001 CAL has a high level of sensitivity to seawater, sweat or chlorine

Colors and effects can appear different when illuminated with different light sources. Swarovski uses standard light source D50 for color decision and comparison.

© 2018 D. Swarovski Distribution GmbH