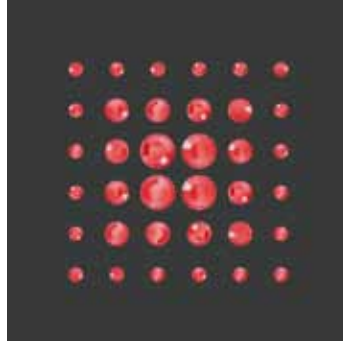




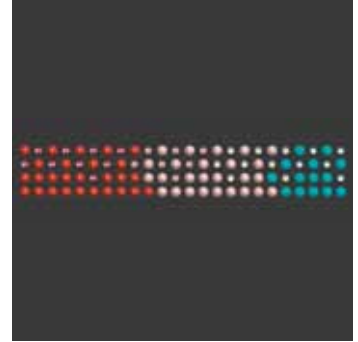
Trend Collection
News

12 871 01



C	262/262/262	
E	S6/S12/S20	
S	~29x29	
M	125 PCS	100%

12 872 03



C	001RCPRL/001PCPRL/001JAPRL/ 289/234/319/238	
E	P4/P4/P4/S10/S10/S10/S10	
S	~123x20	
M	42 PCS	35%



Trend Collection
Embracing Togetherness

12 850 04



C	001WPL/001/001MOL/001TRAHFT/234	
E	P3/S5/S6/S10/S12	
S	~977x18 (55 SEG/ROW)	
M	7 ROWS	70%

12 851 04



C	092-279NAC/001/001/001/001/001/001	
E	M2-P3/CS8X5/CS5X2/CE8X4/S6/S8/S12	
S	~948x25 (26 SEG/ROW)	
M	6 ROWS	35%

12 852 04



C	279NAC/001WPL/001/001	
E	P3/P4/2037MM8/2037MM14	
S	~41x40	
M	68 PCS	75%

12 853 04



C	001WPL/279NAC/001AB/234	
E	P3/P4/S5/S10	
S	~59x59	
M	39 PCS	60%

12 854 04



C	279NAC/279NAC/001/001/001/001	
E	P3/P4/2037MM8/2037MM14/ 2037MM17/S6	
S	~128x193	
M	7 PCS	20%

12 855 04



C	001WPL/001/001AB/234/001MOL	
E	P3/S3/S5/S6/S10	
S	~180x96	
M	4 PCS	23%

12 856 04



C	001WPL/279NAC/001/001AB/234/001MOL	
E	P3/P4/S3/S5/S6/S10	
S	~179x98	
M	4 PCS	23%



12 857 06

C	001LUMG/001VOL/266/001METBL/215
E	S6/S8/S16/S20/S30
S	~81x107
M	16 PCS 35%

12 858 06

C	071-001/266/207/001METBL/288
E	MST-S3/S6/S6/S6/S6
S	~66x49
M	28 PCS 55%

12 859 06

C	096/092-001SSHA/215/001AB/215/001TRAHFT/001LUMG/213AB
E	M2/MST-CS3X3/2035MM6/S3/S3/S6/S10/S16
S	~62x64
M	21 PCS 60%

12 860 06

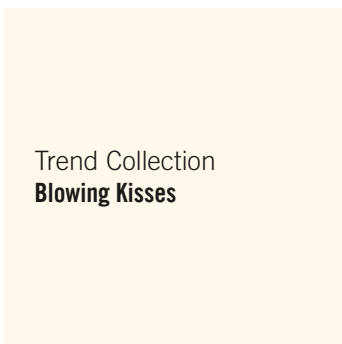
C	070/070-280HEM/001AB/266/001VOL/001MOL/280HEM
E	M3X3/MST-CS5X2/S5/S6/S6/S8/S10
S	~88x107
M	18 PCS 35%

12 861 06

C	092/070-001SSHA/001AB/001VOL/234/001TRAHFT/266/001METBL
E	M2/MST-CS3X3/S3/S6/S8/S8/S10/S20
S	~198x279
M	1 PCS 15%

12 862 06

C	280HEM
E	S34
S	~175x298
M	3 PCS 14%




12 873 08

C	001PCPRL/001RCPRL/262/362
E	P4/P7/S10/S10
S	~34x34
M	84 PCS 100%

12 874 08

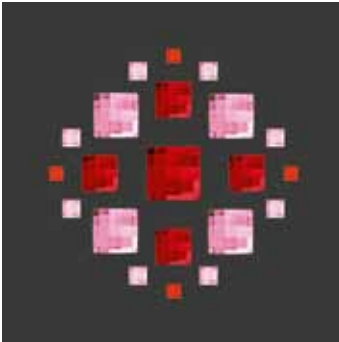
C	001RCPRL/262/262
E	P4/S6/S10
S	~26x26
M	162 PCS 100%

12 875 08



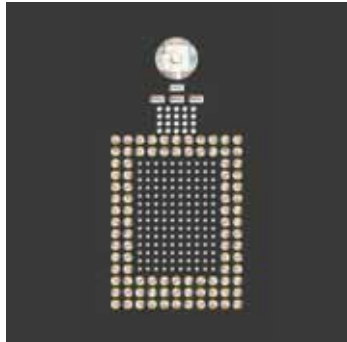
C	223/227/262	
E	S3/S5/S6	
S	~18x18	
M	180 PCS	100%

12 876 08



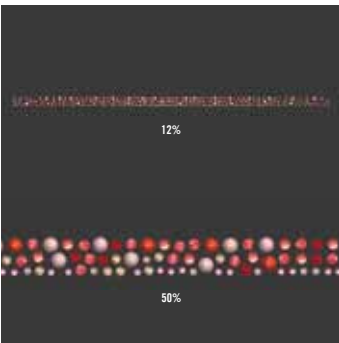
C	227/223/227/223/227	
E	CS3X3/CS4X4/2493MM8/2493MM10/ 2493MM12	
S	~55x55	
M	45 PCS	60%

12 877 08




C	001AB/001/001/001/001/001TRAHFT	
E	CS5X2,5/CS5X2,5/2035MM14/S3/S6/S12	
S	~43x90	
M	20 PCS	40%

12 878 08



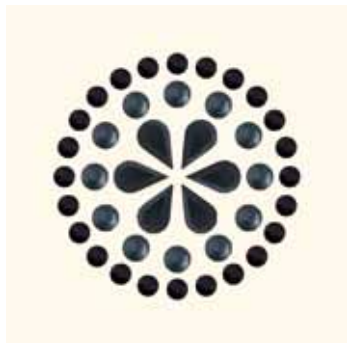
C	001PCPRL/001RCPRL/209/319/362/262/ 227/542
E	P4/P4/S6/S6/S8/S10/S10/S12
S	~349x10
M	18 PCS

12 879 08




C	280/280HEM/280/280HEM	
E	P3/P7/2037MM8/S16	
S	~37x37	
M	76 PCS	90%

12 880 08




C	280HEM/280HEM/280	
E	P4/CS8X5/S12	
S	~36x36	
M	80 PCS	90%

12 881 08



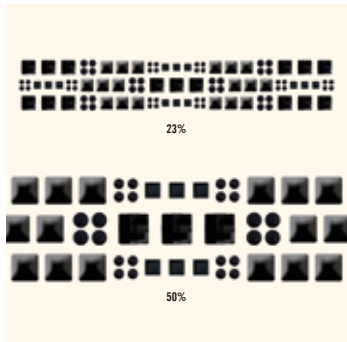
C	280/280HEM/280	
E	CS5X2/CS3X3/2035MM10	
S	~31x31	
M	115 PCS	100%

12 882 08



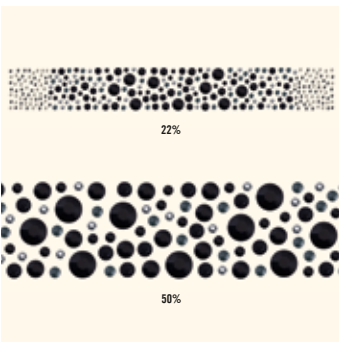
C	280/280HEM/280	
E	2493MM8/S6/S8	
S	~66x26	
M	81 PCS	60%

12 883 08



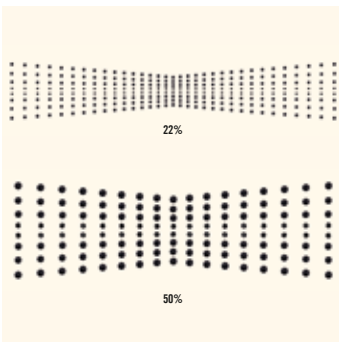
C	070-280/280/280/280
E	M7X7-P4/CS4X4/2493MM8/S10
S	~180x29
M	25 PCS

12 884 08



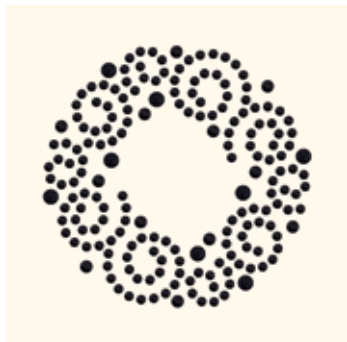
C	070-280HEM/280/215/280HEM/280/ 280/280
E	M2-P3/P4/S6/S8/S10/S20/S34
S	~195x25
M	23 PCS

12 885 08



C	280/280/280
E	S3/S5/S6
S	~196x34
M	12 PCS

12 886 08



C	280/280/280	
E	P3/S5/S8	
S	~50x50	
M	48 PCS	70%

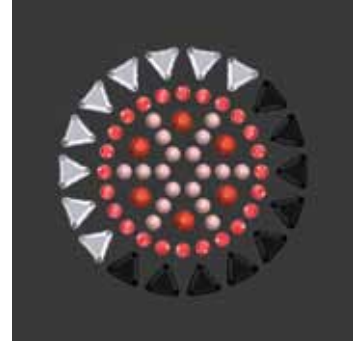


12 863 10



C	280/001COP/394/280HEM/266/280HEM/001COP/394
E	P3/S6/S6/S6/S6/S8/S8/S12
S	~67x53
M	42 PCS 60%

12 864 10



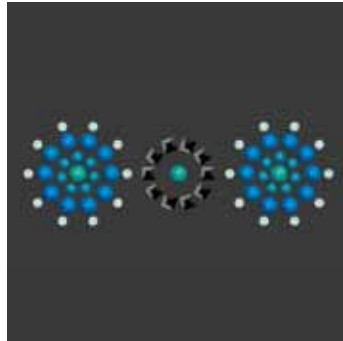
C	001PCPRL/001RCPRL/001/280/262
E	P3/P4/CS7X6/CS7X6/S10
S	~47x47
M	45 PCS 70%

12 865 10



C	001JAPRL/001TUPRL/542/294
E	P4/P4/S16/S16
S	~54x39
M	56 PCS 70%

12 866 10



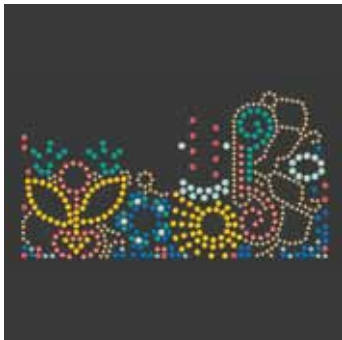
C	070-001LPPRL/001TUPRL/294/394
E	M3X3-P4/P4/S8/S10
S	~75x25
M	66 PCS 55%

12 867 10



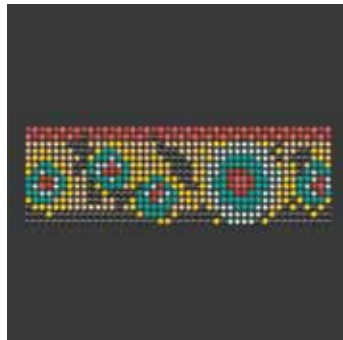
C	280HEM/220/001MLGLD/001GSHA/001BRSH
E	CS5X2,5/S6/S6/S8/S16
S	~195x93
M	9 PCS 22%

12 868 10



C	001TUPRL/001LPPRL/246/292/542/262/360/294
E	P4/P4/S10/S16/S16/S16/S16/S20
S	~202x111
M	8 PCS 20%

12 869 10



C	070-001TUPRL/001RCPRL/246/292/238/262
E	M4-P4/P4/S16/S16/S16/S16
S	~202x64
M	12 PCS 20%

12 870 10



C	070/070-220/236/227
E	M2/M8-S6/S6/S10
S	~49x80
M	39 PCS 50%